



Wow! I Made It.com

Dressing Table

Most girls have lots of very important “stuff” that can’t be accommodated in their dressers, and they never have enough room for displaying perfume bottles, pictures, knickknacks, and jewelry. This fabric-covered dressing table solves the problem. It’s even large enough to double as a study desk!



Materials and Supplies

- 22 linear feet of 1 x 8 pine
- 19 linear feet of 1 x 12 pine
- 1 piece of 1/4"-thick plywood, 30" x 48"
- 1 piece of 3/4"-thick plywood, 22" x 48"
- 1 piece of 1/8"-thick glass, 22" x 48"

- 1 double-layered piece of quilt batting, 26" x 52"
- 5-1/2 yards of 3/4" diameter cording
- 2 coordinating fabrics, each 36" wide:
 - Fabric #1, 1-1/2 yards for tabletop
 - Fabric #1, 1/2 yard for cording
 - Fabric #2, 5-1/2 yards for skirt
 - Fabric #2, 1/2 yard for cording
- Optional extra fabric for covering back of assembly:
 - Fabric #1, 1/4 yard for cording
 - Fabric #2, 2-3/4 yards for skirt
 - Fabric #2, 1/4 yard for cording

Hardware

- Approximately 50 #6 x 1-1/4" flathead wood screws
- Approximately 40 #6 x 2" flathead wood screws
- Approximately 25 3d finishing nails

Cutting List

Code	Description	Qty.	Material	Dimensions
A	Side	4	1 x 12 pine	28-1/2" long
B	Top/Bottom	4	1 x 12 pine	13-1/2" long
C	Shelf	4	1 x 12 pine	12" long
D	Back	2	1/4" plywood	13-1/2" x 30"
E	Bin Front/Back	12	1/8" pine	11-3/4" long
F	Bin Side	12	1 x 8 pine	9" long
G	Bin Bottom	6	1/4" plywood	9-3/8" x 10-5/8"
H	Table Top	1	3/4" plywood	22" x 48"

Notes on Materials

Because I wanted to place my finished dressing table against a wall, I bought only enough fabric to cover its front and sides. (Okay, I'm cheap!) If you'd like to skirt the back of the dressing table, too, add the extra fabric and cording listed in the "Materials List."

Unless you want to make your own cording, purchase it from a fabric shop, coordinating it with your selected fabrics.

Making the Base Units

1. Underneath the skirt, the dressing table is supported by two identical units, each of which contains three drawers. To make the first unit, start by cutting the following pieces from 1 x 12 pine: two 28-1/2"-long sides (A); two 13-1/2"-long top/bottom pieces (B); and two 12"-long shelf pieces (C).
2. Glue the two top/bottom pieces (B) over the raw ends of the two sides (A) to form a rectangular box as shown in *Figure 1*. Insert three 1-1/4" screws at each joint.

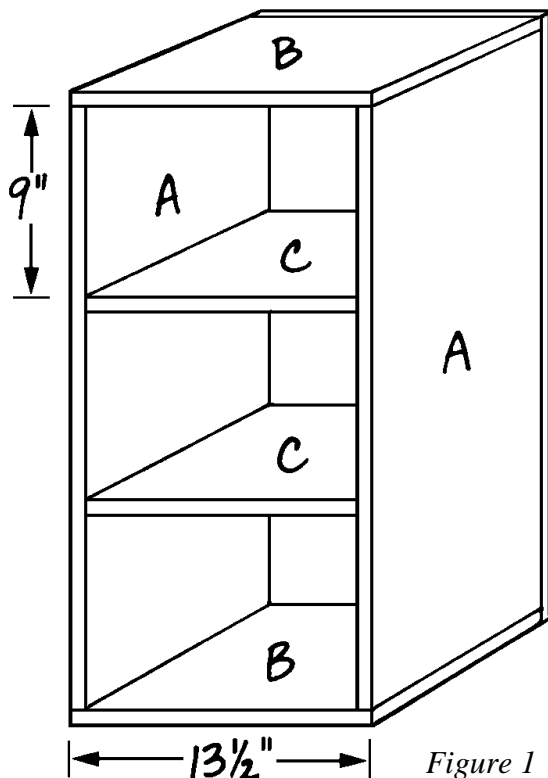


Figure 1

3. Fit the two shelves (C) into the rectangular box, spacing them evenly, so that each of the three openings is exactly 9" high (see *Figure 1*).
4. Glue the shelves (C) to the sides (A) and insert four 2" screws along the length of each joint.
5. Cut one 13-1/2" x 30" back (D) from 1/4"-thick plywood. Glue the back (D) onto the back edges of the assembled unit as shown in *Figure 1*, and secure it with 3d finishing nails spaced 4" apart.
6. Repeat Steps 1 through 5 to construct a second base unit that is identical to the first.

Making the Drawer/Bins

1. There are a total of six bins, three in each of the dressing-table units. These aren't actually drawers, as they simply sit inside the units, but they can be pulled out if desired. Each bin is identical in size and in method of construction (see *Figure 2*). To make them, start by cutting twelve 11-3/4"-long bin front/back pieces (E) and twelve 9"-long bin sides (F) from 1 x 8 pine.
2. Cut a 1/4" x 14" dado on the inside of each bin piece (E and F), 3/8" from its lower edge to accommodate the plywood bottom.
3. From 1/4"-thick plywood, cut six 9-3/4" x 10-5/8" bin bottoms (G).
4. Assemble and glue together one bin as shown in *Figure 2*. Note that the bin front/back pieces (E) over lap the ends of the bin sides (F). Use three 1-1/4" screws at each joint.

- Repeat the bin-assembly process in Step 4 five more times to construct the remaining five bins.

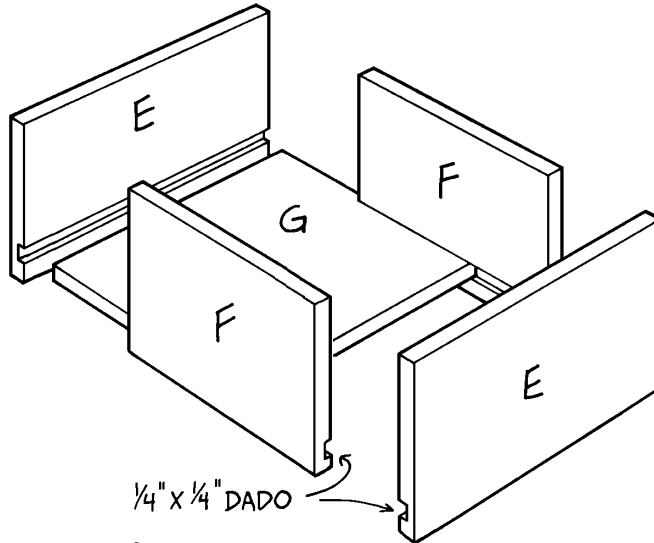


Figure 2

Constructing the Top

- The dressing table top is constructed of $\frac{3}{4}$ " thick plywood covered with quilt batting and fabric #1. The skirt—made from fabric #2—is then attached to the table top (H). Start by cutting a 22" x 48" table top (H) from $\frac{3}{4}$ " thick plywood.
- Cut a 26" x 52" double layer of quilt batting.
- Cut a 26" x 52" piece of fabric #1.
- Place the piece of fabric #1 on a smooth surface, right side down. Place the double layer of quilt batting over the fabric. Center the top (H) over the quilt batting. Then bring the edges of the fabric up and over the edges of the table top (H) and staple them to the plywood. To minimize wrinkling, first staple the center of one side, then the center of the opposite side, and work your way out to the corners, smoothing the fabric as you go. Staple the centers of the remaining sides and again work your way out to the corners. Be generous with the staples; use enough to keep the fabric taut and eliminate puckering along the sides.
- To attach the fabric-covered top to the two base units, place the top upside down on a flat surface. Place the two base units upside down on top of it, spacing them as shown in Figure 3. Attach the base units to the top by inserting 1-1/4" screws through all four corners of each of the units. Turn the entire assembly right side up when you're finished.

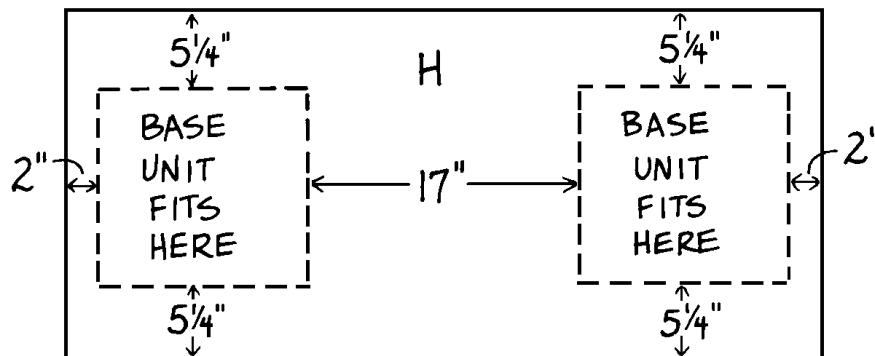


Figure 3

Making the Skirt

6. If you intend to skirt all four sides of the assembly, skip to Step 7. To skirt the two sides and front, first cut the 5-1/2-yard-long piece of fabric #2 in half to get two pieces, each 2-3/4 yards long.
7. Sew a 1" hem along the 2-3/4-yard edge of one of these two pieces and along both of the sides, as shown in *Figure 4*.

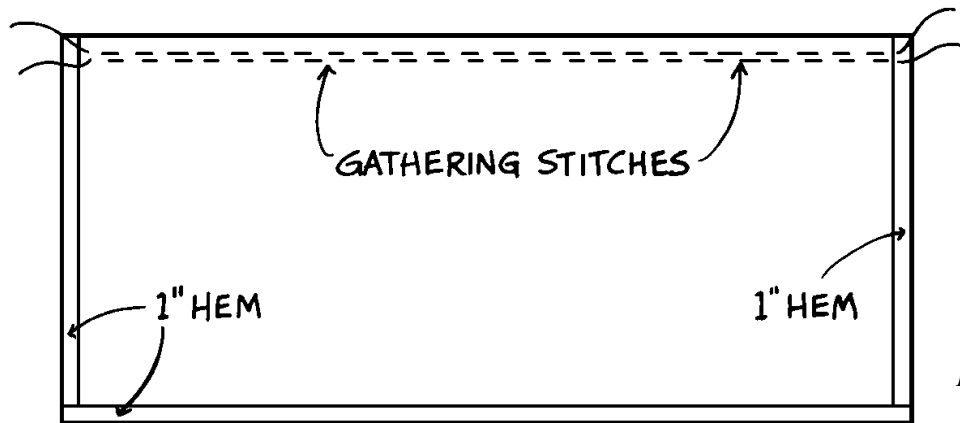


Figure 4

8. Sew a double row of gathering stitches 1" from the remaining raw edge (see *Figure 4*). Pull the gathers until the gathered edge measures 56".
9. Repeat Steps 2 and 3 to hem and gather the remaining 2-3/4-yard long piece of fabric #2.
10. Now you'll attach the gathered edges of these two pieces onto the edge of the padded table top (H). Place the first fabric piece right side down on the left side of the table top (H), with the gathered edge overhanging the edge of the table top and the hem 6" right of center, as shown in *Figure 5*. Adjust the overhang so that when the gathered skirt piece is stapled and pulled down, the skirt will just touch the floor. Staple the skirt to the top edge of the table top. Don't be stingy with the staples; you want a perfectly straight edge after you turn the skirt down. Work your way from 6" left of center, left across the front, across the side, and 4" around the back.
11. Repeat Step 5 to attach the remaining piece of gathered fabric to the right side of the padded table top. The two pieces should overlap by 6" in the center of the dressing table.
12. To skirt all four sides of the entire assembly, hem and attach the entire 8-1/4 yards of fabric #2 as a single piece, beginning and ending with a 6" overlap in the front.

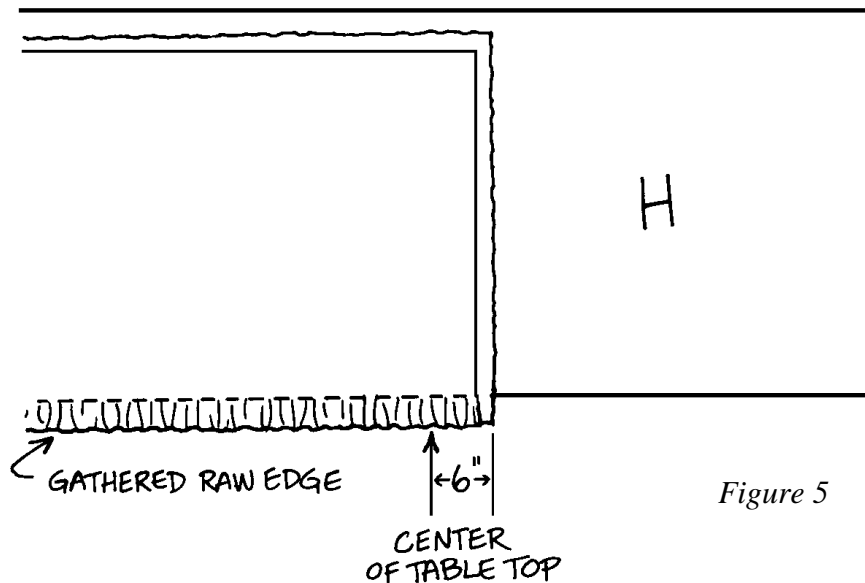


Figure 5

Adding the Cording

1. Now you'll cover the edge of the skirt cording with fabric #1. Because the fabric will be gathered, it must be twice as long as the cording itself. Start by cutting the 5-1/2 yards of cording in half so that you have two equal pieces, each 2-3/4 yards long.
2. Using the 1/2 yard of fabric #1, cut and seam together enough 3"-wide x 36"-long strips to produce a strip 3" wide and 5-1/2 yards long.
3. Fold the fabric strip lengthwise and sew a 1/2" seam along the raw edges.
4. Turn the fabric strip right side out to form a tube.
5. Pull one piece of the cording through the tube and adjust the gathers evenly along the length.
6. Repeat Steps 2 through 5 to cover the remaining cording with the 1/2 yard of fabric #2.
7. Glue the cording covered with fabric #1 to the top edge of the padded table top (H), over the gathered skirt. Begin at the back, work across one side, across the front, across the other side, and end at the back.
8. Repeat Step 7 to glue the cording covered with fabric #2 just below the previously glued cording.
9. Set the piece of 1/4" glass on top of your finished dressing table and await the rave reviews!

Enjoy many other indoor and outdoor projects from www.wowimadeit.com !

